

# FT2012 Series-nut connected electric ball valve

## FT2012S Series-flange square head connection electric ball valve

### Product Overview

It is widely used in building automatic control systems such as heating, ventilation, air conditioning and refrigeration. It can adjust the flow of fluid in the system pipeline by controlling the opening or closing of valves and the opening (analog) of valves, in order to obtain a comfortable greenhouse environment and achieve the effect of saving energy.

### Product Features

- Equal percentile traffic characteristics
- Valve body brass forging
- 600KPA closed differential pressure, PN16 ~ PN20 valve body pressure
- Equipped with manual mechanism, easy to adjust and easy to maintain
- The built-in micro switch is specifically in place with power-off function, and the service life of the motor is longer.
- The actuator is dismantled and easy to install. It can be installed after the equipment and pipeline are installed.
- The closing pressure difference is large, the closing is strict, and the valve is flexibly opened, which can effectively prevent water hammer

### Analog features

The equipment after verification will adjust the valve angle according to the signal input voltage signal; If there is no signal input, the valve will be closed;

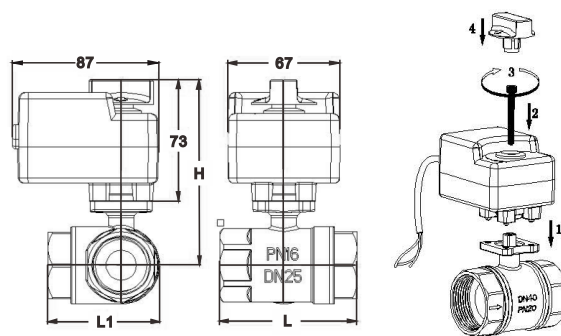
### Driver parameters

Motor type	Synchronous machine	Power cord length	300mm
Action Time	25 seconds	Torque	4N.m
Close differential pressure	≤0.6Mpa	Nominal pressure	PN16~PN20
Medium temperature	15~95°C		
Watt consumption	50/60Hz 6W(Only when the valve is open)		
Applicable media	Cold, hot water or 50% ethanol solution		
Electrical specifications	24VAC/110VAC/220VAC/24VDC		
Operating angle	0°/90°		

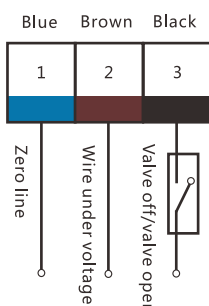
### Valve body parameters

Product specifications	Caliber	Product Size(mm)			KvValue M/H	Net Weight KG
		H	L	L1		
Two-way	DN15(1/2)	110	50		12	0.15
	DN20(3/4)	114	55		17	0.21
	DN25(1)	120	65		20	0.3
	DN32(1-1/4)	125	74		25	0.54
Three-way	DN15(1/2)	108	56	43	12	0.21
	DN20(3/4)	115	68	56	17	0.35
	DN25(1)	120	83	63	20	0.54

### Photo illustration

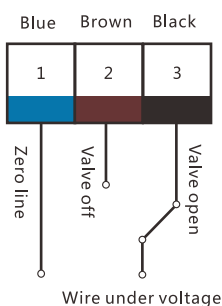


### Wiring diagram



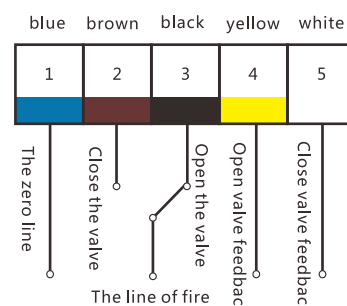
220VAC/24VAC

Three-wire and one-control (normally open/normally closed)

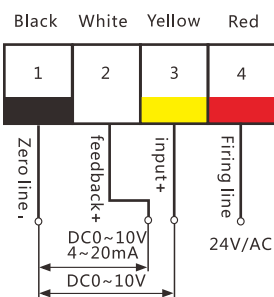


220VAC/24VAC

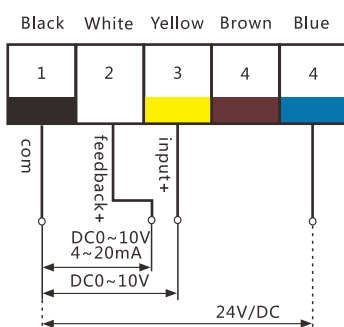
Three-wire two-control wiring diagram



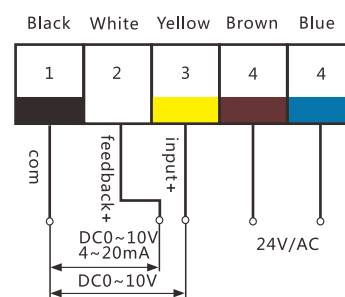
Three line and two control active feedback wiring diagram



four-wire 24V/AC Analog control



four-wire 24V/DC Analog control



Five-wire 24V/AC Analog control