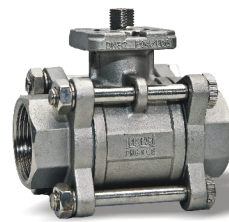
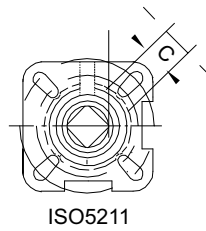
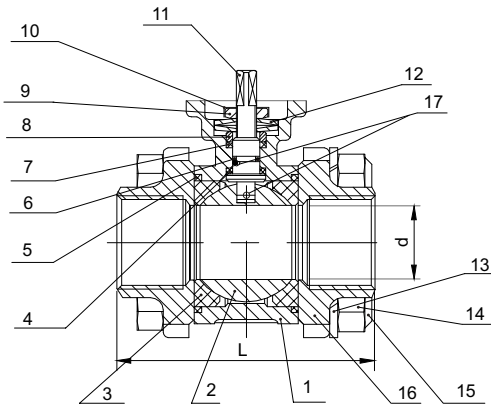


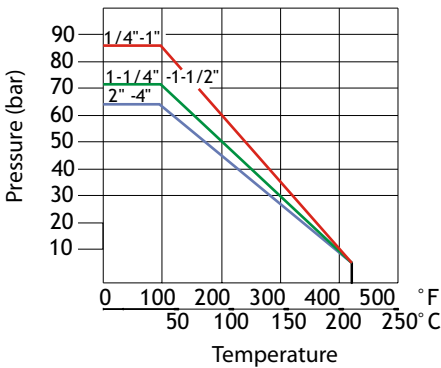
## V203 Direct Mount Pad, AISI316, BSP Threaded End, Full Bore Ball Valves



### Material List

No	Part Name	Material	Qty
1	Body	AISI316	1
2	Ball	AISI316	1
3	Ball Seats	R-PTFE (%15)	2
4	Stem Ring	PTFE	1
5	Body Gasket	PTFE	2
6	Stem O-Ring	Viton	1
7	Packing	PTFE	1
8	Pressure Sleeve	AISI304	1
9	Nut	AISI304	1
10	Nut Locking	AISI304	1
11	Stem	AISI316	1
12	Disc Springs	AISI301	2
13	Washer	AISI304	4 (Max 12)
14	Nut	AISI304	4 (Max 12)
15	Bolts	AISI304	4 (Max 6)
16	Cap	AISI16	2
17	Anti-Static Device	AISI12	2

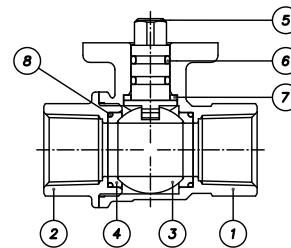
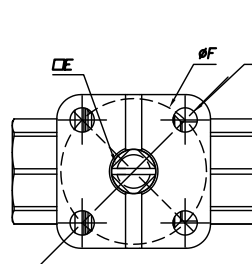
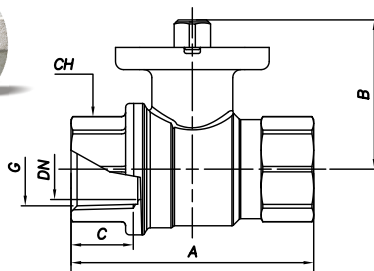
### Pressure Temperature Diagram



### Dimensions (mm)

Size (DN)	d	L	C	ISO5211 Top Flange	Torque (N.m)	Weight (Kg)
1/4"	11	50	9	F03	4	0,46
3/8"	12,5	60	9	F03	4	0,48
1/2"	15	75	9	F03	5	0,51
3/4"	20	80	11	F04/F05	8	0,89
1"	25	90	11	F04/F05	10	1,27
1-1/4"	32	110	14	F05/F07	14	2,04
1-1/2"	40	120	14	F05/F07	18	3,00
2"	50	140	14	F05/F07	25	3,80
2-1/2"	65	185	17	F07/F10	48	7,80
3"	80	205	17	F07/F10	75	12,40
4"	100	240	17	F07/F10	110	20,80

## V204 Direct Mount Pad, Brass, BSP Threaded End, Full Bore Ball Valves



### Material List

No	Part Name	Material	Qty
1	Body	CW617N Nickel Coated Brass	1
2	Cap	CW617N Nickel Coated Brass	1
3	Ball	CW617N Nickel Coated Brass	2
4	Ball Seats	PTFE	2
5	Stem	CW617N Nickel Coated Brass	1
6	Ring	NBR 80 sh	2
7	Seat	PTFE	1
8	Ring	NBR 70 sh	2

### Dimensions (mm)

DN	G	CH	A	B	C	D	E	F	PN	Torque (Nm)	Kv
15	1/2"	24,5	62	37	15	6	9	F03	64	2,1	16,3
20	3/4"	31	68	39,5	16,3	6	9	F03	40	2,4	29,5
25	1"	38	82	50,5	19	6	9	F03	40	2,8	43
32	1 1/4"	48	95	55,5	21,4	6	9	F03	25	3,1	89
40	1 1/4"	54	107	75	21,4	7	11	F05	25	4,3	230
50	2"	67	125	82	25,7	7	11	F05	25	5,2	265
65	2 1/2"	84	151	102,5	30,2	6,5	14	F05	16	20	518
80	3"	99	174	121	33,3	8,5	14	F07	16	44	820
100	4"	122	199	131,5	32,6	8,5	14	F07	16	80	1180

