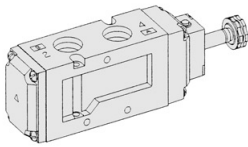


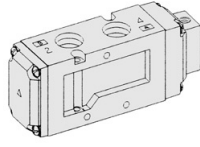
SF6000. 1/2

"F" FLEXIBLE Series
Solenoid / Pneumatic Valves

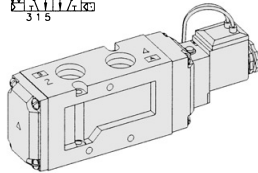
- 5/2, 5/3 - 1/2
- 36mm Body Width
- Transition Flow 3500ℓ/min (5bar)



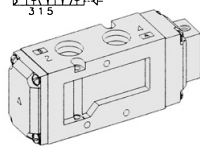
SF6101-IP-
1/2



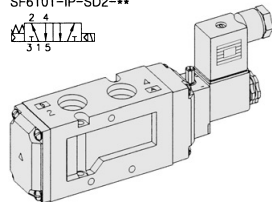
SFP6101



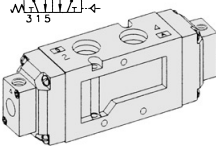
SF6101-IP-SD2-1/2



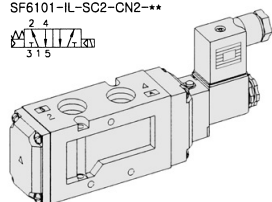
SFP6103



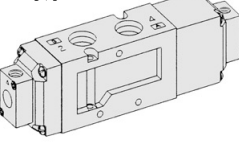
SF6101-IL-SC2-CN2-1/2



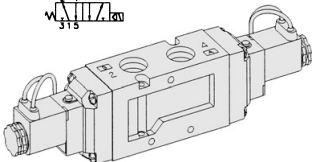
SFP6200



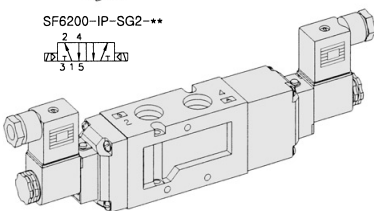
SF6103-IP-SC2-CN2-1/2



SFP6303



SF6200-IP-SG2-1/2

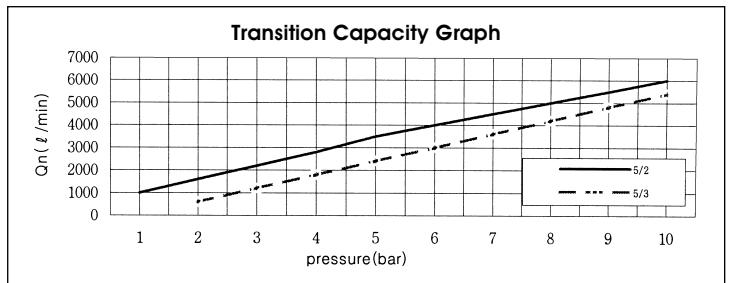


SF6303-IP-SC2-CN2-1/2

** : Voltage Selection (see page 62)

SPECIFICATION

ITEM	SERIES	SOLENOID, PNEUMATIC	
		5 Port 2 Position	5 Port 3 Position
Fluids		Compressed Air & Inert Gases	
Pressure(bar)		1.5~10.0	2.0~10.0
Eff. Sectional Area(mm ²)-5bar		65.0	50.0
Ambient & Fluid Temp.		5~60°C (41~140°F)	
Response Time(5bar)		30ms or Less	40ms or Less
Max. Working Frequency		2c/sec	1c/sec
Lubrication		Not Required(Use ISO VG32 #)	
Manual Override		Push Button(Standard), Lever Lock(Option)	
Coil Insulation Class		F-Class or Equivalent	
Permissible Voltage Variation		±10% of Rated Voltage	
Off Min. Residual Voltage		AC:20% or Less / DC:10% or Less	
Power Consumption		Holding-AC:5.5VA(60Hz) / DC:2.5W	



The Material of Parts

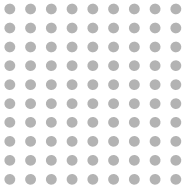
- Valve Body : Die-Cast Aluminium
- Spool : Aluminium
- Seals : NBR
- Spring : Stainless
- Cap : Zinc Pressure Die-Cast
- Pilot Parts : Glass Filled Nylon
- Armature : Stainless Steel
- Armature Seals : Viton

* The specification on each item can be amended without any prenotice to improve a performance.
* The specification on each item can be different from actual specification.

ORDERING NO.

SF6 1 0 1 - I P - SC2 - CN2 - A2

Valve Series	Function	Port Size & Thread	Return Method	Int/Ext. Pilot	Manual Operator	Solenoid Coil Type	Connector Type	Voltage
SF6 : Solenoid Valve	1 5/2 Single	0 G 1/2	0 None	1 Internal Pilot	0 None	0 None	0 None	0 None
	2 5/2 Double	1 NPT 1/2	1 Air + Spring		P Push Non-Locking	SC2 3 Pin Connector Coil	CN2 Normal Connector	A2 AC 220V
	3 5/3 Closed Center		2 Air		L Lever Locking	SG2 Grommet/Flying Leads	CD2 Connector With LED	A1 AC 110V
	4 5/3 Open Center		3 Spring			SD2 Grommet/Flying Leads With LED	CZ2 Connector With LED & Surge Suppressor	A4 AC 24V D4 DC 24V D2 DC 12V
SFP6 : Pneumatic Valve	5 5/3 Pressure Center							

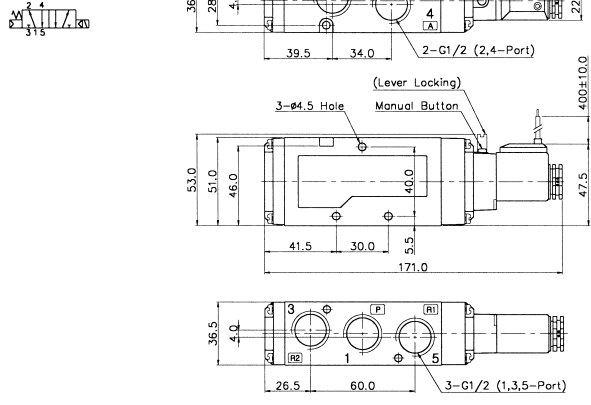


Solenoid & Pilot Actuated Spool Valves

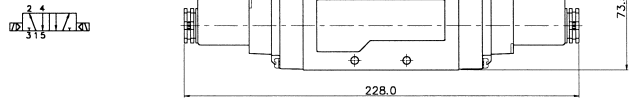
Port Thread 1/2

5Port 2Position Solenoid Valve

Single Solenoid
SF6101-IP-SD2-***

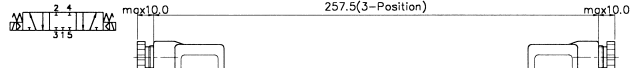


Double Solenoid
SF6200-IP-SC2-CN2-***

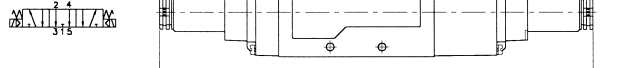


5Port 3Position Solenoid Valve

Closed Center
SF6303-IP-SC2-CN2-***



Exhaust Center
SF6403-IP-SC2-CN2-***

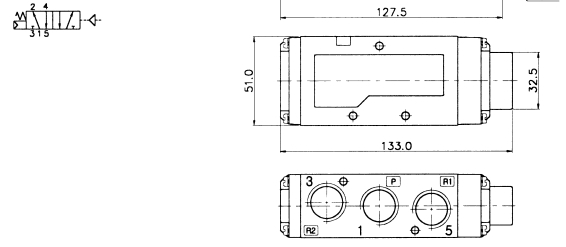


Pressure Center
SF6503-IP-SC2-CN2-***

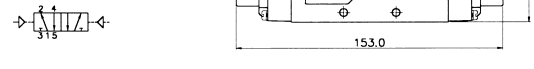


5Port 2Position Pneumatic Valve

Single Pneumatic
SFP6101

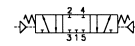


Double Pneumatic
SFP6200

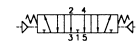


5Port 3Position Pneumatic Valve

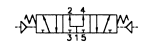
Closed Center
SFP6303



Exhaust Center
SFP6403



Pressure Center
SFP6503

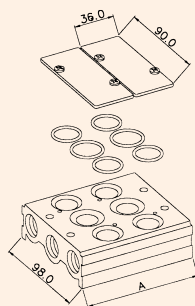


MF6000 MANIFOLD BLOCK

(SF6000 Solenoid & Pneumatic Valve Use)

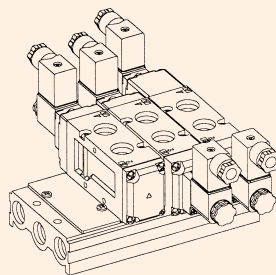
5-Port Manifold Block

MF6500-4



MF6500-BLK
Blanking Plate
Gasket O-Ring

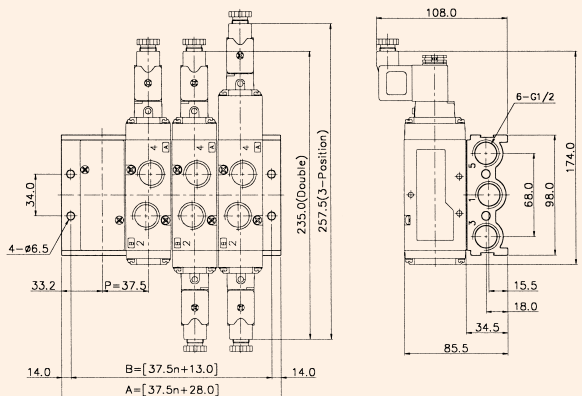
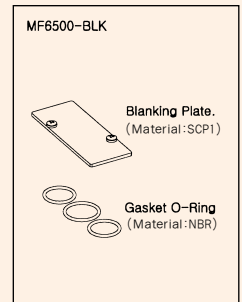
MF6500-02
Manifold Block



Manifold Block Ordering Code

MF 6500		-		2	
Series	MF6500	Manifold Station	5 Way	02	2-Station
				04	4-Station
				06	6-Station
				08	8-Station
				10	10-Station

Blanking Plate Ordering Code



5-PORT MANIFOLD BLOCK DIMENSION

ITEM	n	2	4	6	8	10
B		88.0	163.0	238.0	313.0	388.0
A		103.0	178.0	253.0	328.0	403.0